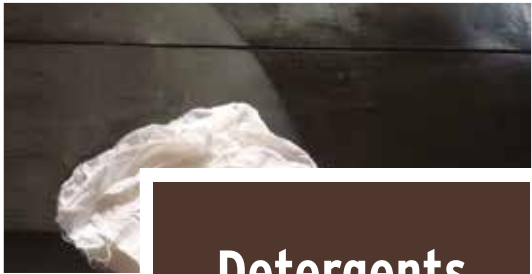


The logo for XSTONE TREATMENTS features a stylized 'X' icon composed of three horizontal bars of varying lengths, stacked vertically. To the right of this icon, the word 'XSTONE' is written in a bold, uppercase, sans-serif font. A registered trademark symbol (®) is positioned at the top right of the 'E' in 'STONE'. Below 'XSTONE', the word 'TREATMENTS' is written in a smaller, uppercase, sans-serif font. The entire logo is centered on the page.

XSTONE®
TREATMENTS

STONEMASON LINE



Detergents

C1.07
neutral detergent

C1.08
degreasing detergent

C1.09
wax remover water-based

C1.09S
wax remover degreasing
solvent-based

C1.EPOXY
detergent to clean epoxy
residues and glues



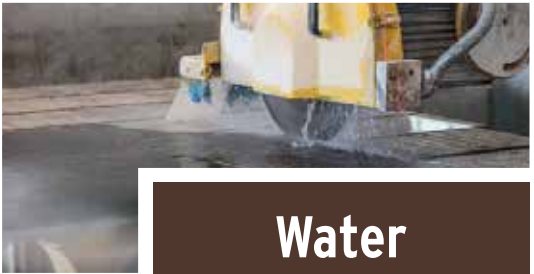
Acid Detergents

C1.03
acid detergent to clean
after building for all surfaces

C1.24
acid detergent to clean after building
on smoothed surfaces

C1.30
acid detergent to remove
saltpetre on rough surfaces





Water Treatments

M7.80
liquid flocculant
in emulsion

M7.81
killing and control foam

M7.82
bactericidal
detergent sanitizing

M7.83
PH corrector +

M7.84
PH corrector -



Machinery Maintenance

M7.85
cleaning and restoring
machinery and equipment

M7.86
lubrificant protective
for machinery maintenance





Stain Removers

SR.OIL

stain remover to remove oil and grease stains

SR.KOLOR

stain remover to remove organic stains

SR.KOLOR-PLUS

stain remover to remove colored stains

SR.WHITE

stain remover to remove dark stains from absorption

SR.BLACK

stain remover to remove dark stains on black granites

SR.OXIDE

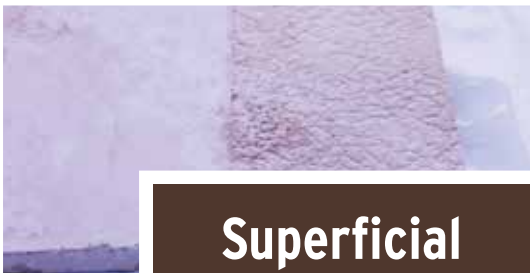
stain remover to remove ferrous oxidations

SR.RUST

stain remove to remove rust on granites

SR.RUST-Q

stain remove to remove rust on quartzites



Superficial Correctors

P.E.3. SAND

chemical sandblaster for marble and calcium based stones

P.E.3. MATT

acid treatment with matt effect for marble and calcium based stones

P.E.3. WIND

acid treatment with irregular effect for marble and calcium based stones

P.E.3. ANTIQUE

acid treatment with antique effect for marble and calcium based stones





Water-repellent Protectives

T3.02

water-repellent for all surfaces

T3.02H

water-repellent without solvent
for all surfaces

T3.04 DAMP

protective against rising damp
for all surfaces

T3.04 DAMP H

protective against rising damp
without solvent for all surfaces

T3.17

protective to conceal imperfections
of marbles and granites



Anti-slip

T3.SLIPPY

anti-slip for polished granite surfaces

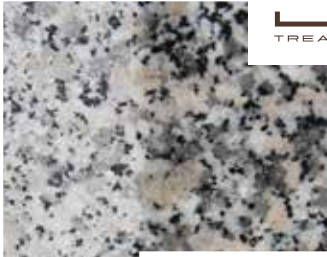
T3.SLIPPY MARMO

anti-slip for polished marble surfaces

T3.SLIPPY GRES

anti-slip for polished stoneware surfaces





**Colour
Enhancing**

T3.05

wet-effect for brushed
and smoothed surfaces

T3.15

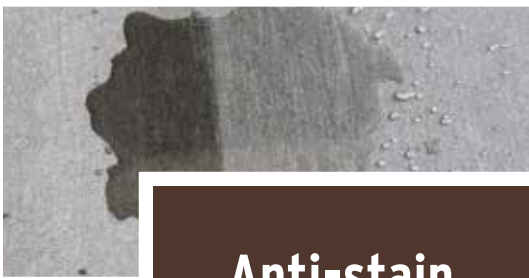
wet-effect for polished surfaces

T3.45

wet-effect for antique surfaces

T3.45 OUT

wet-effect for antique
outdoor surfaces



Anti-stain

T3.11

anti-stain
for polished surfaces

T3.11H

anti-stain
without solvent
for polished surfaces

T3.21

anti-stain
for smoothed surfaces

T3.21H

anti-stain
without solvent
for smoothed surfaces

T3.31

anti-stain
for rough surfaces

T3.31H

anti-stain without solvent
for rough surfaces

T3.36

anti-stain reviving
for rough surfaces.
Special for porphyry

T3.91

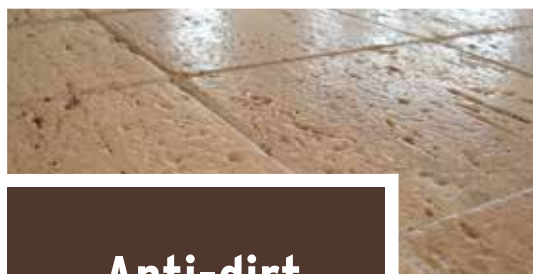
permanent
anti-stain process
for natural quartzite





F5.21
anti-dirt without solvent
for smoothed surfaces

F5.31
anti-dirt without solvent
for rough surfaces



Anti-dirt



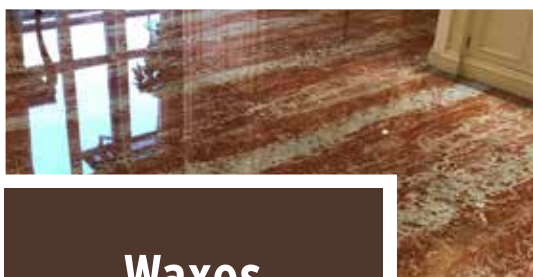
F5.WAX
neutral paste wax
for polished surfaces

F5.WAX BLACK
black paste wax
for polished surfaces

F5.12
liquid wax
for polished surfaces

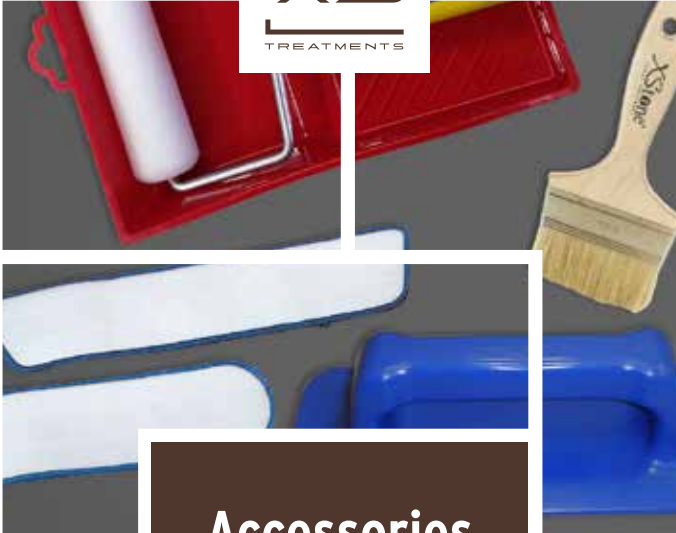
F5.12 LINE
liquid wax for waxing
machines for polished surfaces

F5.13
cream wax
for polished surfaces



Waxes





Accessories

BRUSH

to apply treatments

MICROFIBRE CLOTH - 42

to apply treatments on floors

CLOTH HOLDER - 42

tool to use with microfiber cloth - 42

MICROFIBRE CLOTH - 27

to apply treatments on coatings

CLOTH HOLDER - 27

tool to use with microfiber cloth - 27 and abrasive pad - 27

ABRASIVE PAD - 27

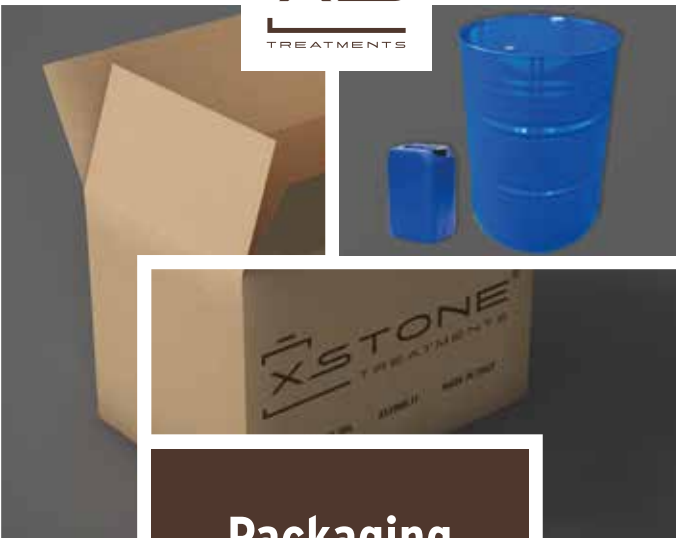
to use in cleaning phase; colour available black, green, brown and white

PACKS OF ROLLER TRAYS

to apply treatments

ROLLER SPARE

to apply treatments



Packaging

box of **20 pcs of 0,5 lt / kg**

box of **12 pcs of 1 Lt / Kg** for solved - based products

box of **16 pcs of 1 Lt / Kg** For water - based products

box of **8 pcs of 2 Lts / Kgs**

box of **4 pcs of 5 Lts / Kgs**

tanks of **25 - 200 Lts / Kgs**

